

**British &
British European Design Group
Participants at**

**Maison&Objet Paris
NOW! Design à Vivre - Hall 8A
& Halls 2,4,5,6,7**

21.-25.01.2011

British Creativity
as Global Trendsetter

La Créativité Britannique -
le 'Trendsetter' mondial



British European Design Group Participants

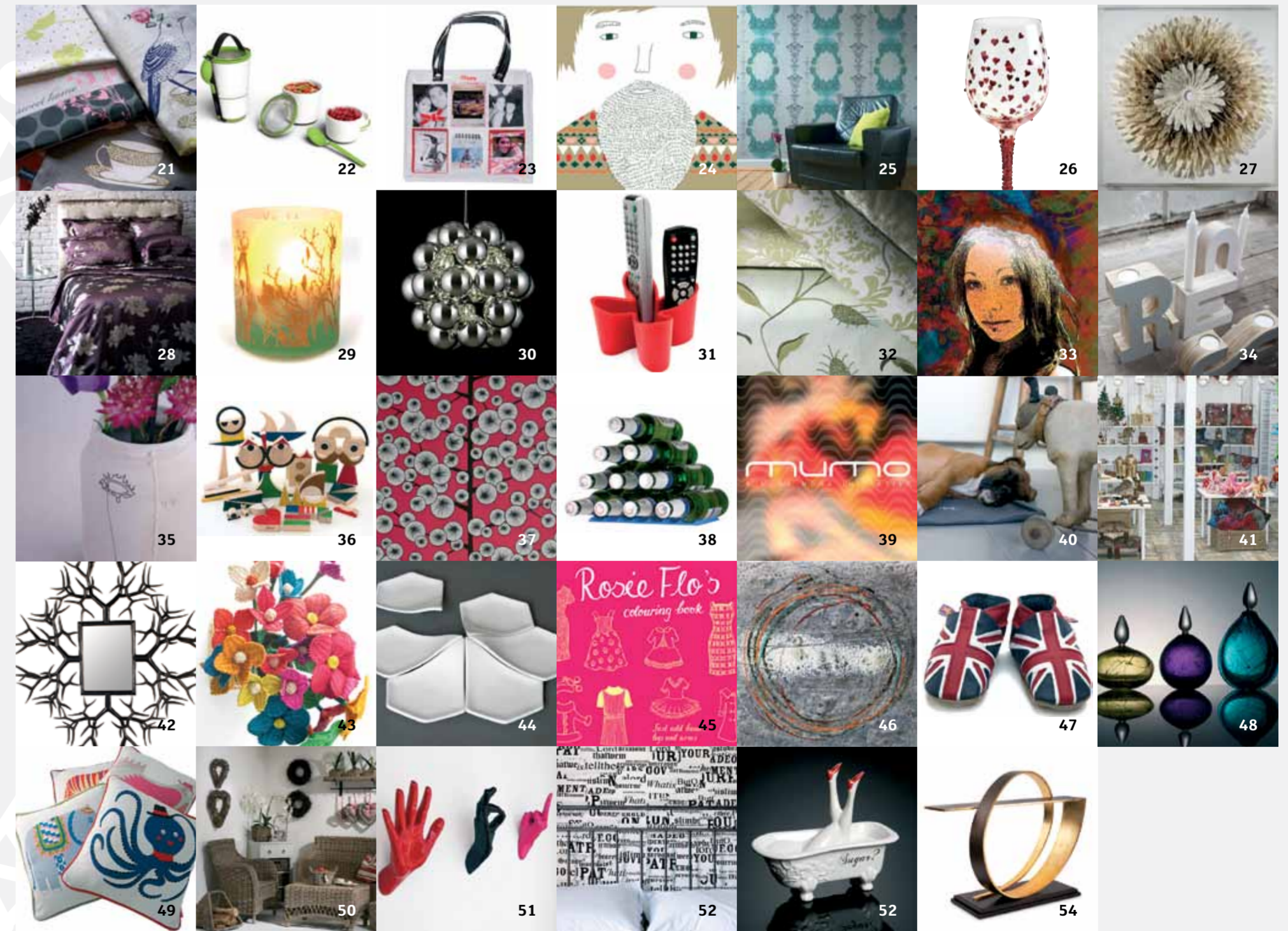
- 01. CHAE YOUNG KIM
www.chaeyoungkim.com
- 02. CHARLENE MULLEN
www.charlenemullen.com
- 03. DENISE O'SULLIVAN CERAMICS
www.crazy-creations.co.uk
- 04. FRIENDS OF WILSON LTD
www.friendsofwilson.com
- 05. HANDMADE INTERIORS
www.handmade-interiors.co.uk
- 06. JILL PHILLIPS
www.jill-phillips.com
- 07. LINDSAY ALKER
www.lindsayalker.com
- 08. MELIN TREGWYNT MILL
www.melintregwynt.co.uk
- 09. MOGWAIi DESIGN
www.mogwaiidesign.com
- 10. NAJA UTZON POPOV
www.najautzonpopov.com
- 11. NICK MUNRO DESIGN LTD
www.nickmunro.com
- 12. OWEN WALL CERAMICS
www.owenwall.co.uk
- 13. QURZ
www.t-shima.com
- 14. RACHEL DORMOR CERAMICS
www.racheldormorceramics.com
- 15. SIMON PATTISON DESIGN
www.simonpattison.com
- 16. SQUID LONDON
www.squidlondon.com
- 17. STAFFORDSHIRE UNIVERSITY / T/A FLUX
www.staffs.ac.uk
- 18. SUSAN BRADLEY DESIGN
www.susanbradley.co.uk
- 19. VITAMIN A LIFE LESS ORDINARY
www.vitaminliving.com
- 20. WALLACE SEWELL LTD
www.wallacesewell.com

Independent Exhibitors

- 21. ASHLEY THOMAS DESIGN & ILLUSTRATION
www.ashleythomas.webs.com (Hall 4, E26)
- 22. Black+Blum LTD
www.black-blum.com (Hall 6, G42)
- 23. CLIPPYKIT LTD
www.clippykitlondon.co.uk (Hall 4, F122)
- 24. DONNA WILSON LTD
www.donnawilson.com (Hall 8, L20)
- 25. ELLI POPP DESIGNS BY KATJA BEHRE
www.ellipopp.com (Hall 8, J15)
- 26. GAELTAG KELTIKA LTD
www.lolitadesigns.co.uk (Hall 6, R43)
- 27. GILL WILSON PAPERWORKS
www.gill-wilson.com (Hall 4, E20)
- 28. GINGERLILY LTD
www.gingerlily.co.uk (Hall 2, F74)
- 29. HOLISTIC SILK LTD
www.holisticsilk.com (Hall 5A, J30)
- 30. INNERMOST LTD
www.innermost.net (Hall 8A, M43)
- 31. J-ME
www.j-me.co.uk (Hall 6, L60/J59)
- 32. JAMES BRINDLEY FABRICS & WALLCOVERINGS
www.jamesbrindley.com (Hall 7, 156)
- 33. JEANNE ROBERTS FINE ART TEXTILES
www.jeannerobertsfinearttextiles.com (Hall 4, E30)
- 34. LINA MEIER STUDIO
www.linameier.com (Hall 8, J15)
- 35. LUCIANNA GALLUCCI
www.luciannagallucci.co.uk (Hall 4, E24)
- 36. MILLERGOODMAN / SILENCE UK LTD
www.millergoodman.com (Hall 6, J6)
- 37. MISSPRINT
www.missprint.co.uk (Hall 7, D147)
- 38. MODE PRODUCT DESIGN
www.modestudio.co.uk (Hall 6, G52)
- 39. MUMO LTD
www.mumo-uk.com (Hall 5A, E100)

'The BEDG is an opportunity to introduce your ideas internationally. I have benefited greatly from their help and thanks to exhibiting with them my design work was introduced to different companies and markets.'

- All Siahvoshi, Lilite



WWW.BEDG.ORG

f /bedg.org

t /BEDG_London



www.ukti.gov.uk



The British European Design Group
- A unique organisation with
a unique mission: promoting
creative excellence worldwide

This one hundred percent self-financed not-for-profit organisation has been promoting UK Creative Industries worldwide since its foundation in 1991 and has achieved an unparalleled track record of success in promoting creative excellence worldwide and in exporting British creativity to global markets.

Since 1991 the British European Design Group has taken more than 3500 British and British based design professionals, agencies, companies, associations, organisations and institutions working in the Creative Industries to showcase their products and skills in key and emerging export markets worldwide.

The BEDG has organised more than 80 international trade events, 70 curated exhibitions, 41 international seminars, conferences and outward and inward missions within Europe, Russia, North and South America, the Middle East, Africa, Australia, Hong Kong, Taiwan, Japan and China.

Le 'British European Design Group'
- Une organisation privée unique
avec une mission unique:
Promouvoir l'excellence dans
la créativité à travers le monde.

Organisation autofinancée à cent pour cent sans but lucratif qui depuis sa fondation en 1991 a contribué à promouvoir l'excellence dans la créativité à travers le monde et enregistré un record de succès sans précédent, mettant en valeur l'excellence britannique dans le monde et en exportant la créativité britannique sur les marchés mondiaux.

Depuis 1991, le British European Design Group a assisté plus de 3500 professionnels, agences, sociétés, associations, organismes et institutions travaillant dans les Industries Créatives du Royaume-Uni à promouvoir leurs produits et compétences dans les marchés d'exportation clés, ainsi que dans les marchés émergent et a organisé plus de 80 événements commerciaux internationaux, 70 expositions non-commerciales, 41 séminaires, conférences et missions à travers le monde.

'The BEDG is a unique organisation with a passion for design at the heart of their foundation. I have exhibited with the group over the last decade and the BEDG has been, and continues to be, an integral support structure for my company and many others alike. Perhaps an unsung hero in the journey of the designer and maker, but never to be underestimated for its strength, determination and vision in supporting emerging and established British talent.'

- Andrew Tanner, Andrew Tanner Design

BRITISH EUROPEAN DESIGN GROUP AT MAISON & OBJET PARIS - NOW! DESIGN À VIVRE



British European Design Group
25 Stanmore Gardens
Richmond, Surrey TW9 2HN | UK
T: +44(0)20 8940 7857
F: +44(0)20 8948 2673
E: info@bedg.org

WWW.BEDG.ORG

The British contingents
at Maison&Objet January 2011
are supported by



The British European Design Group
Contingent at Maison&Objet January 2011
is sponsored by

ICON

